



# Types of Bees

## Poster & Craft



# .Types of Bees.



**Honey Bee**  
*Apis mellifera*



**Africanized Bee**  
*Apis mellifera scutellata lepeletier*



**Cuckoo Bee**  
*Thyreus nitidulus*



**Mason Bee**  
*Osmia lignaria*



**Leafcutter Bee**  
*Megachile leachella*



**Sweat Bee**  
*Augochlora pura*

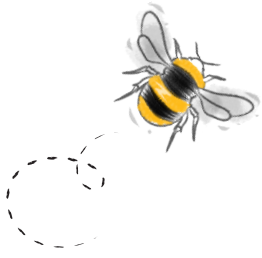


**Carpenter Bee**  
*Xylocopa violacea*



**Bumblebee**  
*Bombus dahlbomii*





# Beehive Dot Art



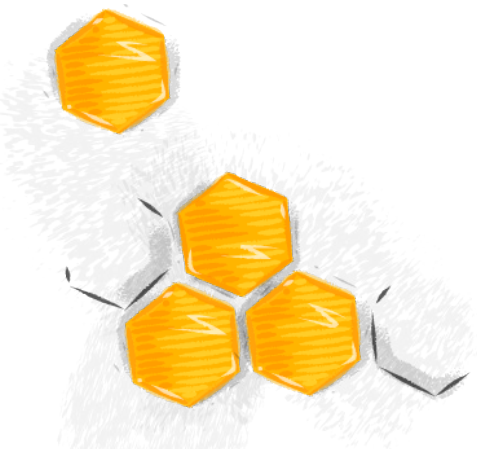
## Materials Needed:

- Printout of PDF: one per child
- Yellow dot paint marker  
(or yellow paint, paper plate, and cotton ball)
- Black marker



## Instructions:

1. Use a yellow dot paint marker to decorate the beehive.  
(Or pour yellow paint onto a paper plate and use a cotton ball.)
2. Use the marker or paint with a cotton ball to decorate the bees.  
Add more bees on your own if you want!
3. Once the paint has dried, add black stripes, wings, and other body parts to your bees with a black marker.





A large, stylized outline of a beehive, composed of several horizontal sections with rounded ends, intended for coloring or labeling.

