

KINGDOMS AND CLASSIFICATION

Grades 3-6

STUDENT JOURNAL

This journal belongs to:



THE GOOD AND THE BEAUTIFUL

INSTRUCTIONS

This student journal accompanies *The Good and the Beautiful Kingdoms and Classification* science unit. It contains all the worksheets and journal pages that are needed to complete the unit. Each student will need his or her own copy of the science journal.

Have each student take his or her time to create high-quality work as the activities and worksheets are completed. Students may enjoy looking back on their past discoveries when they've finished.

TABLE OF CONTENTS

Lesson 1.1
Lesson 23
Lesson 3.6
Lesson 49
Lesson 5.10
Lesson 6.11
Lesson 712
Lesson 8.13
Lesson 9.15
Lesson 1017
Animal Field Journal21

LIVING AND NONLIVING HUNT

*Can be completed outdoors or indoors (looking for items inside or through a window)

Find at least five of the items listed below and write or draw them in the column under "Item." Observe each item and put an X in each box that applies to the item. More spaces are included if you would like to find more items. In the final box, draw an X if the item is living.

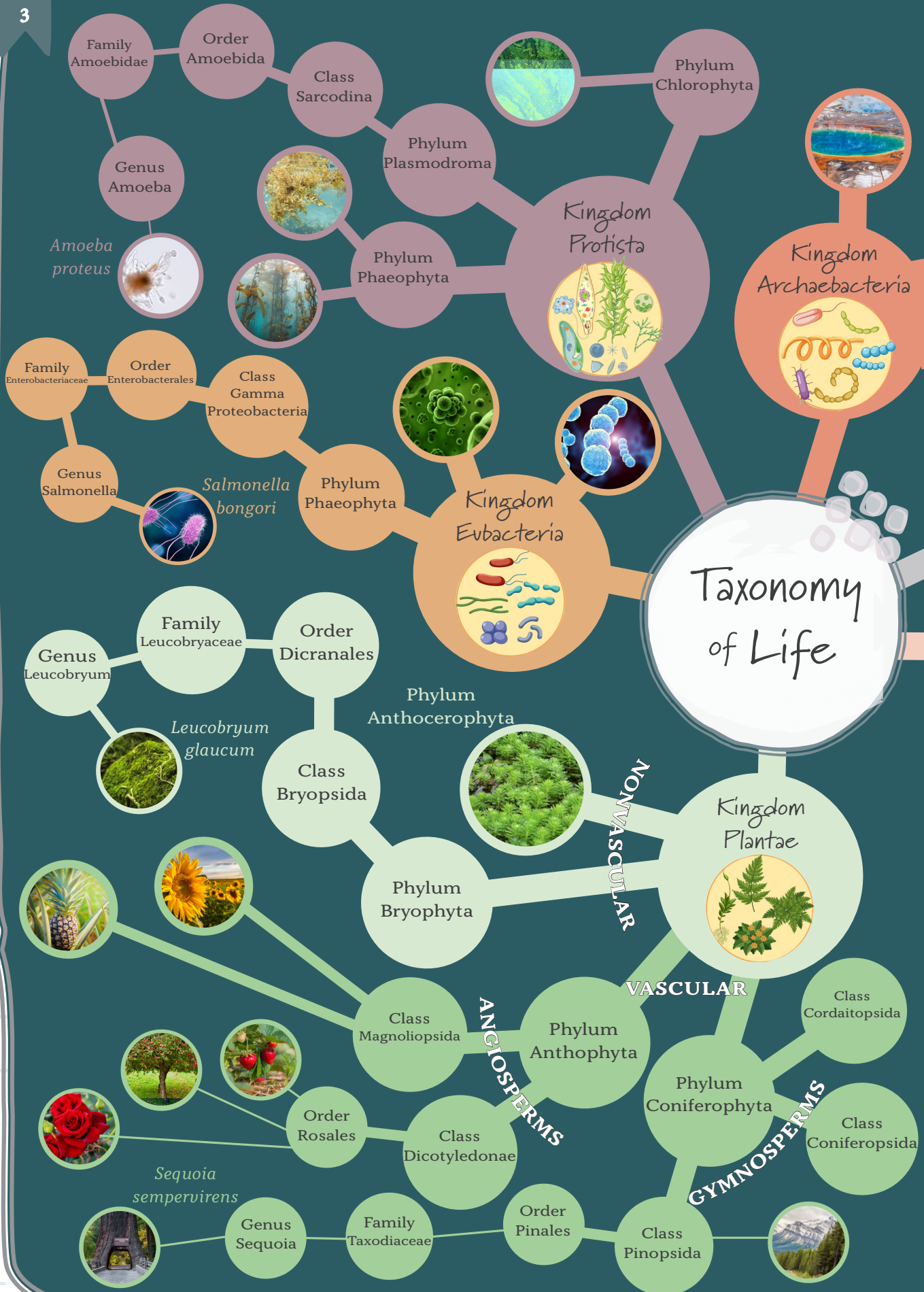
◇ rock
◇ grass
◇ tree
◇ cement

◇ ant
◇ dirt
◇ flower
◇ bird

◇ fence
◇ worm
◇ window
◇ plant

◇ house
◇ pet
◇ book
◇ spider

Item	 Needs Energy	 Grows & Develops	 Has Cells	 Has Senses	 Can Move on Its Own	 DNA	 Reproduces	 Homeostasis	 Living
①									
②									
③									
④									
⑤									
⑥									
⑦									
⑧									
⑨									
⑩									





SCIENTIFIC NAME SEARCH

Referencing the chart below, draw lines from each bird's common name to each part of its scientific name.

COMMON NAME

SCIENTIFIC NAME



MOUNTAIN
BLUEBIRD

TURDUS

FORSTERI



EMPEROR
PENGUIN

APTENODYTES

CURRUCOIDES



SONG THRUSH

MICRATHENE

PHILOMELOS



AMERICAN
ROBIN

SIALIA

MIGRATORIUS



ELF OWL

TURDUS

WHITNEYI

Species
forsteri

Species
philomelos

Species
whitneyi

Species
migratorius

Species
currucoides

Genus
Turdus

Genus
Micrathene

Genus
Aptenodytes

Family
Spheniscidae

Order
Sphenisciformes

Family
Strigidae

Order
Strigiformes

Family
Turdidae

Order
Passerines

Genus
Sialia

Class
Aves

YEAST EXPERIMENT RECORDING SHEET

DATE COLLECTED _____

My Predictions:

Cold Water	Warm Water	Warm Water + Sugar

My Results:

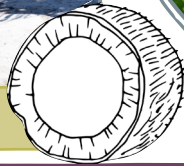
Cold Water	Warm Water	Warm Water + Sugar

SORTING SEEDS

Write an "A" for angiosperm or "G" for gymnosperm in the seed next to each plant.



COCONUT



FIR



GINKGO



APRICOT



PINE



PUMPKIN



BEANS

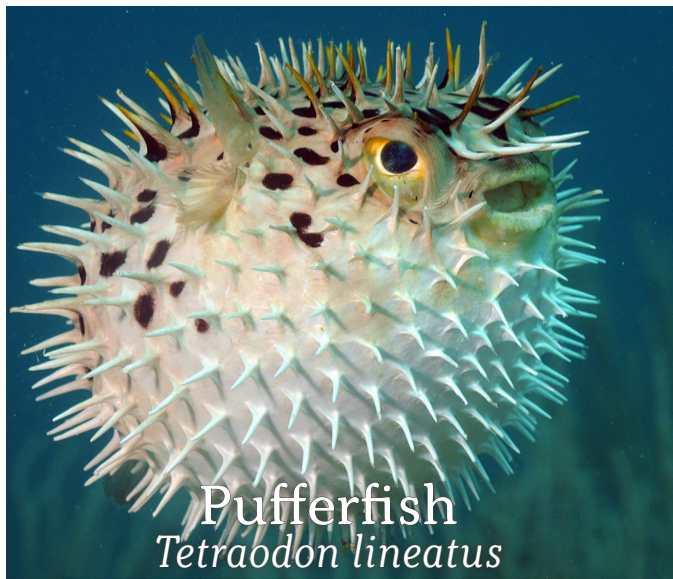


CYCAD



WALNUT





Pufferfish
Tetraodon lineatus



Poison Dart Frog
Oophaga pumilio



Chameleon
Chamaeleo chamaeleon



Ruby-Throated Hummingbird
Archilochus colubris



Dusky Leaf Monkey
Trachypithecus obscurus



Bottlenose Dolphin
Tursiops truncatus


KINGDOM ANIMALIA

- Read the story by replacing the pictures with the words in the key at the bottom.
- Then review the vocabulary cards ECTOTHERM, ENDOTHERM, VERTEBRATE, and INVERTEBRATE.



ran to the door. He was so happy to see the animals. The first thing


he wanted to see was the . He loved how most  have fur to



keep them warm. Next, he went to see the  with their smooth,


scaly skin. His favorite was a  that had skin that could change



colors to camouflage, and right next to it was an  that could jump

really far!  remembered looking for  at a pond near his house.

Flying overhead were  in many different colors. He loved hearing

their songs.  sometimes wished that he could fly like a . As he

walked by a large glass tank, he could see  swimming in the water.

These  came from rivers, and one was really big!  was sad

when it was time to go but glad that he could see so many amazing animals.

Sam



Reptile/s



Mammals



Amphibian/s



Bird/s



Fish



The notebook cover features a light blue grid pattern. Faint, stylized line drawings of various animals and plants are scattered across the background, including giraffes, elephants, birds, and palm trees. A purple arc frames the title text. The title is written in a playful, hand-drawn style. The word 'Animal' is in a dark purple color, and 'Field Journal' is in a dark teal color. The notebook has a silver spiral binding on the left side.

Animal Field Journal

<i>Animalia</i>
<i>Chordata</i>
<i>Mammalia</i>
<i>Primate</i>
<i>Cercopithecidae</i>
<i>Trachypithecus</i>

This monkey, with rings around its eyes that look much like glasses, spends its days playing and eating high in the trees. Like other primates, it has a prehensile tail, hands, and feet that are able to grab fast to branches. Given their small size, these monkeys eat a surprising amount of food each day, about one-third of their body weight!



GLUE CARD HERE

Vertebrates

<i>Animalia</i>
<i>Chordata</i>
<i>Mammalia</i>
<i>Cetacea</i>
<i>Delphinidae</i>
<i>Tursiops</i>

Although they live in the water, these interesting animals are mammals and not fish. They give birth to live young and nurse their babies with milk from their bodies. They do not have gills and must go to the surface to breathe. Being highly intelligent, they can learn tricks and communicate with others in their group.



GLUE CARD HERE

<i>Animalia</i>
<i>Chordata</i>
<i>Reptilia</i>
<i>Squamata</i>
<i>Chamaeleonidae</i>
<i>Chamaeleo</i>

These scaly ectothermic creatures are best known for their unique method of blending in with their surroundings by changing colors. Like monkeys, they have prehensile tails they can wrap around branches for greater stability. Their eyes can see in a full circle around them and can even look in two directions at once.



GLUE CARD HERE

Vertebrates

<i>Animalia</i>
<i>Chordata</i>
<i>Actinopterygii</i>
<i>Tetraodontiformes</i>
<i>Tetraodontidae</i>
<i>Tetraodon</i>

When threatened, these unique animals quickly suck air into their stomachs and become three times larger in less than 15 seconds! Their expanded bodies are covered with dangerous spikes that are also full of some of the most toxic poison on Earth. The ability to puff up is made possible because of their lack of ribs.



GLUE CARD HERE