

FACTS
ABOUT
SERIES

FACTS ABOUT

Beetles & Butterflies

◦ Heidi Poniatowski ◦



THE GOOD AND THE BEAUTIFUL LIBRARY

e

Beetles start life in eggs.
The eggs can be on a leaf.





Look! This beetle came
out of its egg. It is a
grub.



A beetle is an insect. It has six legs. Can you find six legs on this beetle?





A beetle's body has three parts. It has a head, a thorax, and an abdomen.



This beetle can fly.

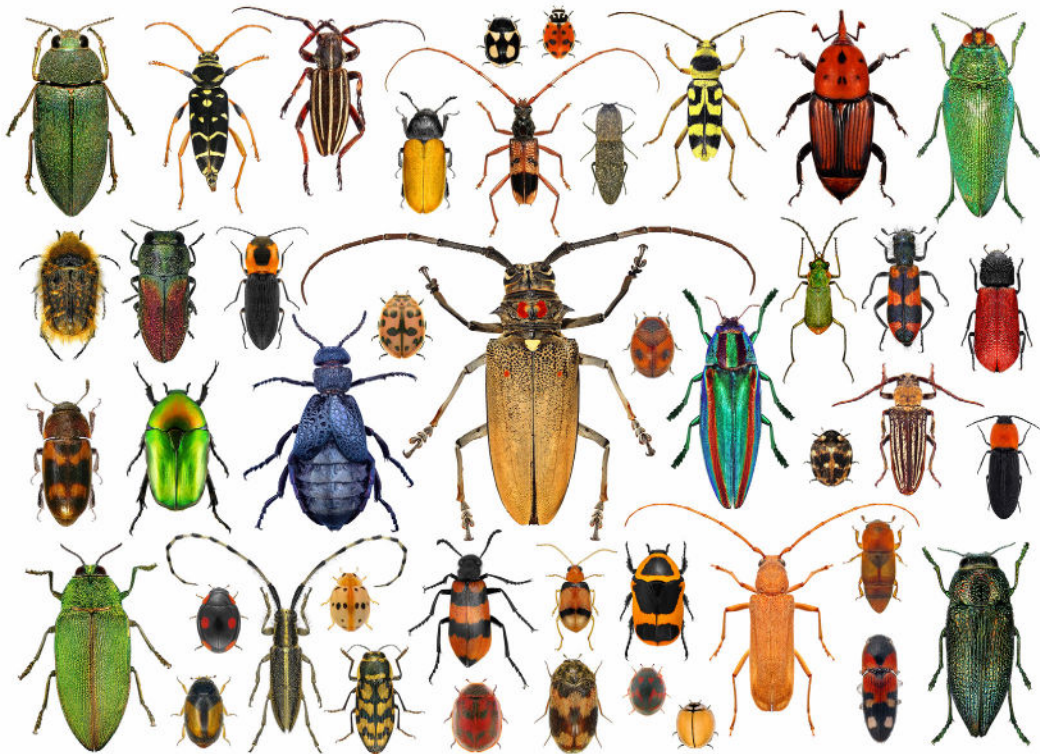


This beetle cannot fly.





There are more beetles than any other kind of insect. Here are some of them.



A butterfly is also an insect.
Do you like butterflies?





Just like a beetle, a butterfly starts its life in an egg. Look at all the butterfly eggs on this leaf!



The birdwing butterfly is the biggest of all butterflies. It can have an eleven-inch wingspan!

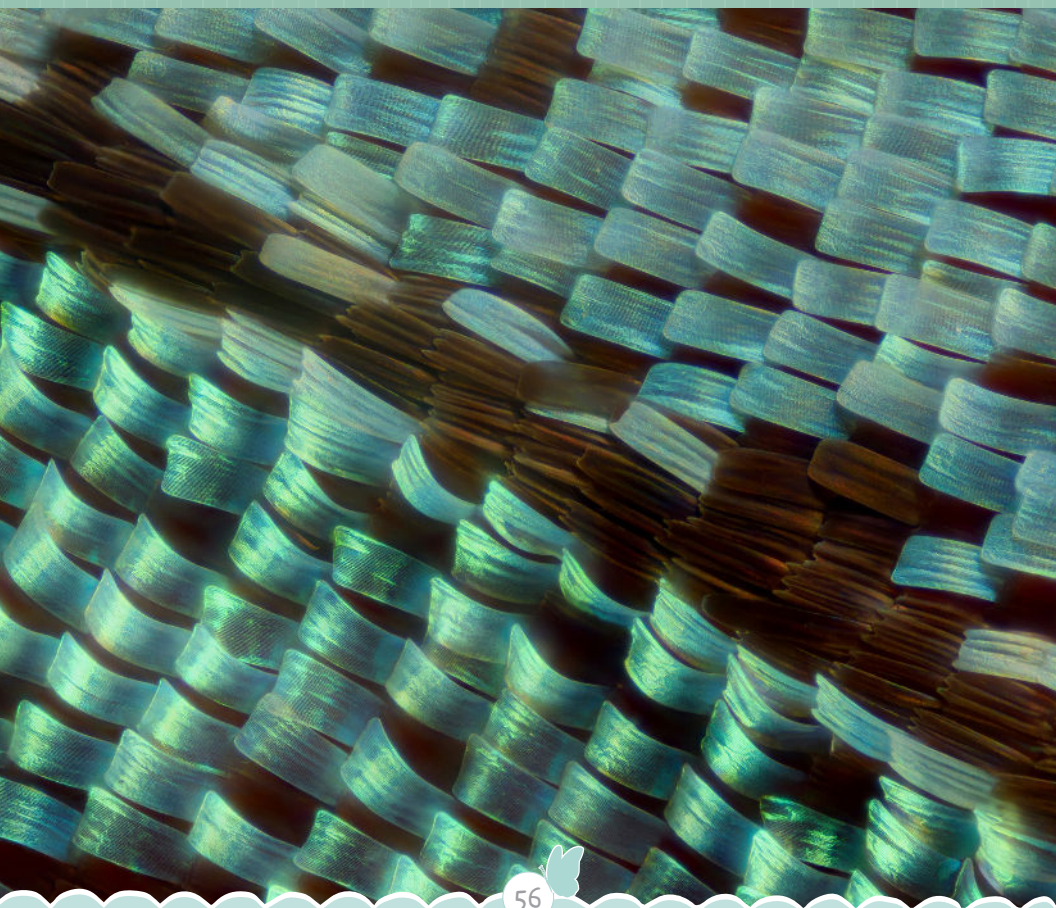




To eat, a butterfly sucks
up nectar with a mouth
part that is like a straw.
The nectar is sweet!



Butterfly wings have fine scales. This is what the scales look like if you get really close.



The scales can come off if you pet them. Can you see this butterfly has a hurt wing?





FACTS ABOUT
Beetles &
Butterflies



I can read it all by myself! The world of beetles and butterflies will fly open for young readers as they enjoy fascinating images and fun-filled facts that will keep them engaged and reading. Readers young and old will be captivated as they learn about the habitats, diets, appearance, and life cycles of these insects. Written for Level 2A readers, *Facts About Beetles and Butterflies* challenges readers to read, learn, observe, and explore!

